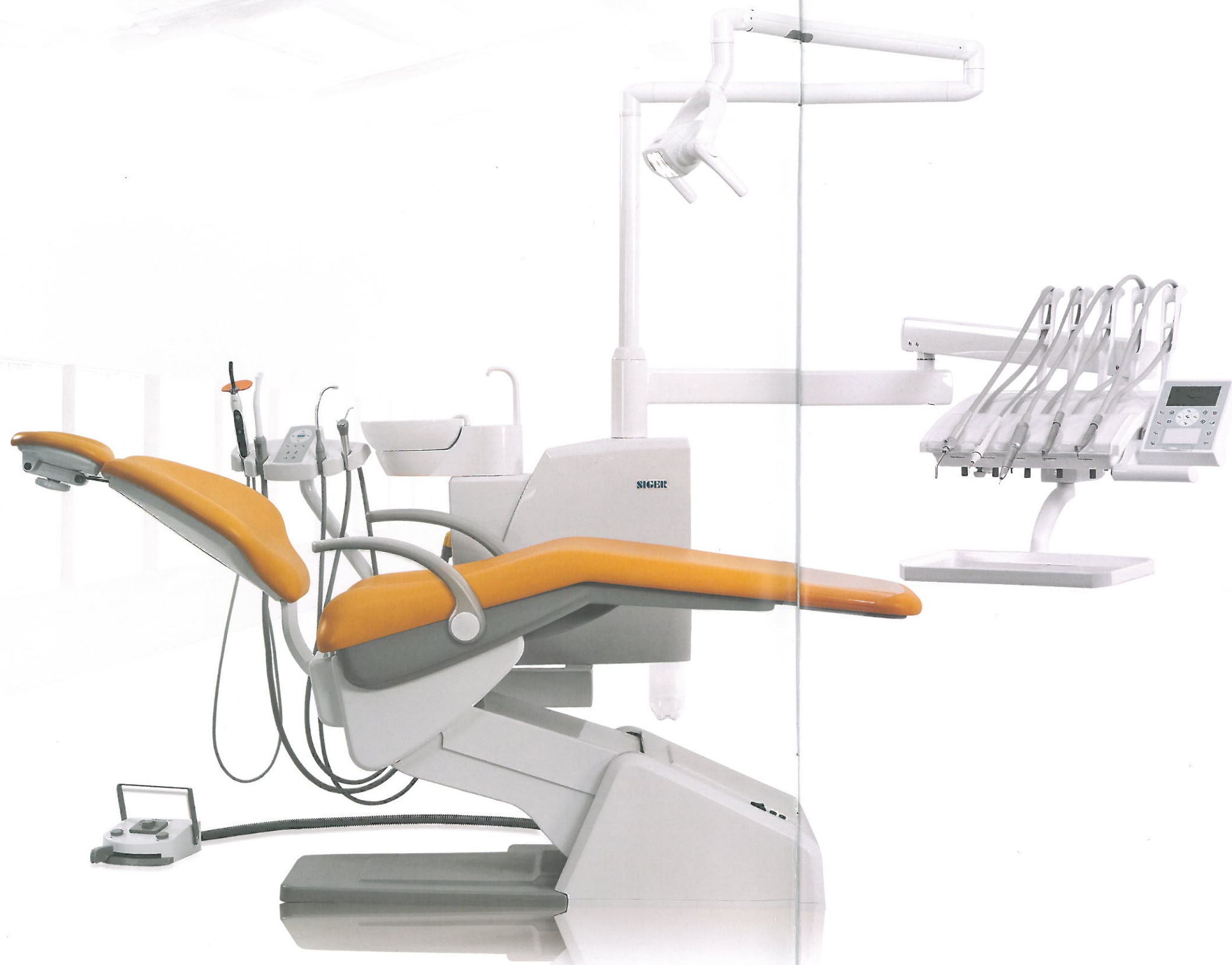


PERFECT SYNTHESIS OF  
IMAGINATION AND REALITY



## ABOUT US

Located in "The National High-Tech Industry Development Zone" in Zhuhai China, Siger is a professional company dealing with R&D and manufacturing of clinical dental equipments.

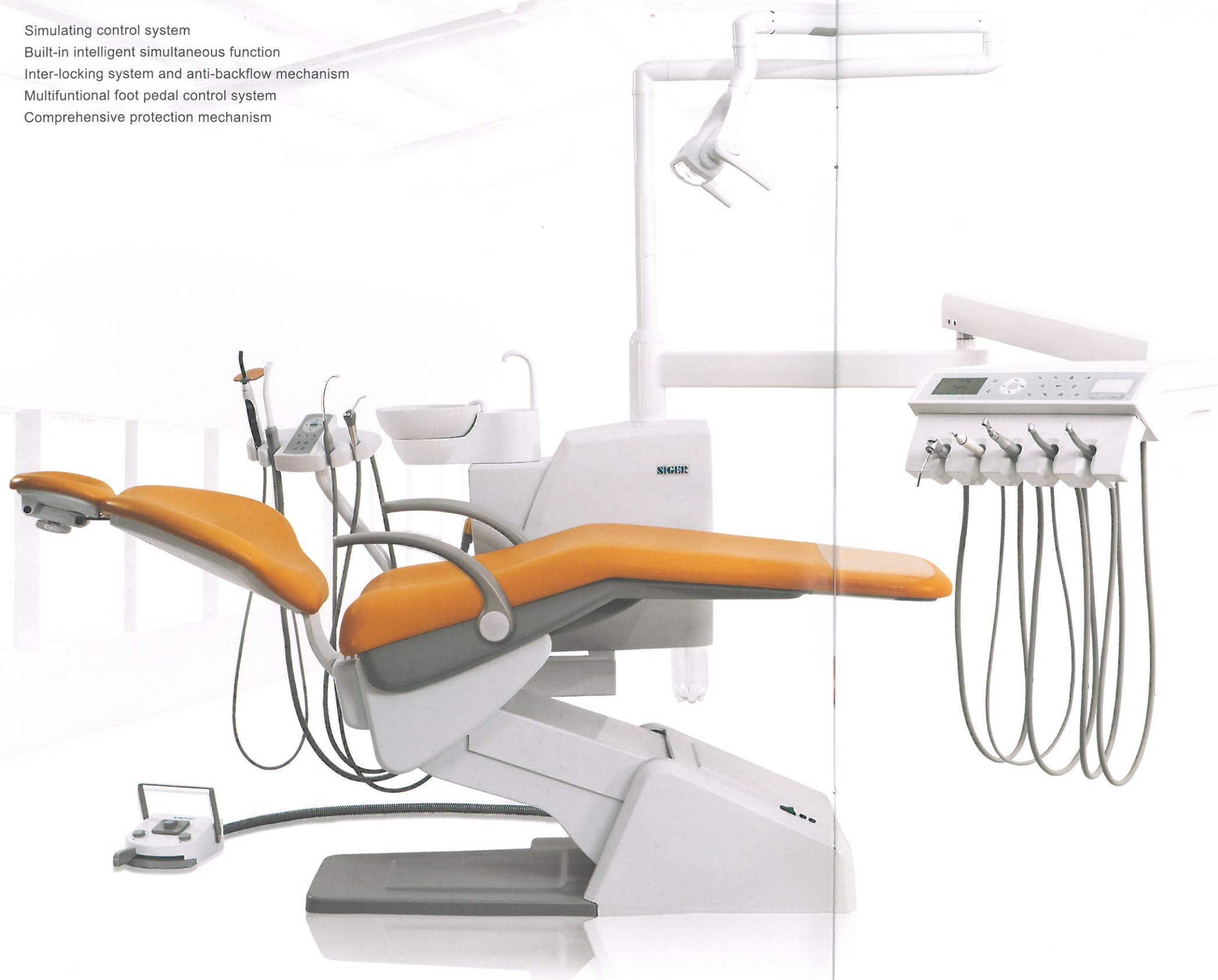
Scientific innovation is Siger's core competence. Tens of scientific results has been approved as national patents, by those Siger manufactured the every first fully digitally controlled dental unit in China, which reaches the leading international technological standard.

Siger products have been fully recognized and highly valued by the professionals and users from home and abroad. At present, large quantities of Siger dental units has been installed and used in a lot of specialist hospitals in China and exported to 70 nations and districts globally. Siger is doing really well especially in the high end market of West Europe.

It is always Siger's ultimate goal to create first class brand, manufacture superb products and providing excellent services.

## PERFECT SYNTHESIS OF IMAGINATION AND REALITY

Simulating control system  
Built-in intelligent simultaneous function  
Inter-locking system and anti-backflow mechanism  
Multifunctional foot pedal control system  
Comprehensive protection mechanism



## SIGER U200

### STANDARD CONFIGURATION:

Swing-type/ hanging-type dentist element  
Touch control panel with LCD display  
Built-in intraoral X-ray film viewer  
Two 4-holes tubings for turbine  
One 4-holes tubing for air motor  
One 3-way syringe for dentist  
Touch control panel for assistant  
One 3-way syringe for assistant  
One hydraulic saliva ejector  
One pneumatic HV suction  
Patient chair of U200 type(Synchronized design)  
Multifunctional headrest  
Left armrest  
Balance arm with air lock system  
Multifunctional foot-pedal with program memory  
LED operating light  
Rotatable hydro-group  
Rotatable/detachable hygienic ceramic spittoon  
Distilled water system  
Cup filling system with warm water  
Dentist stool



# SIGER U200



## DENTIST ELEMENT

Touch control panel with LCD display

Dynamic display of chair status and instrument feedbacks

5 sets of intelligent memory positions can be set in advance. And the control of the chair position, operating light, cup filling and bowl rinsing can be done with one button.

The inter-locking system of the dynamic instruments can greatly prevent the injury and improve the efficiency of dentists.

The on and off of all the dynamic instruments are controlled by photoelectric sensors.



Multi-angle headrest is optional

## ERGONOMIC DESIGN

The synchronized design between the seat and backrest of patient chair guarantees excellent movement compensation.

A safety cut-outs stops the patient chair and backrest from moving down in the presence of obstacles. The chair or backrest will move up a little bit to avoid unexpected harm.

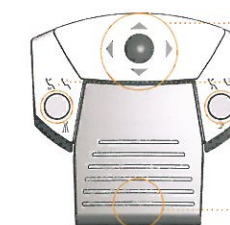


## EASILY CARRY OUT BY MULTIFUNCTIONAL FOOT CONTROL:

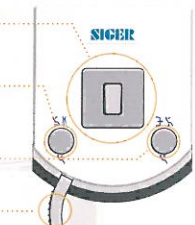
- Automatic access to preset chair position
- Automatic access to preset spittoon position
- Automatic ON/OFF of operating light
- Automatic spittoon rinse
- Automatic cup filling
- Intelligent return to the previous position
- Adjustable chair positions
- Dynamic instruments speed control



Wireless foot control is optional



Pedal-type



Lever-type

## ASSISTANT ELEMENT

Powerful touch control panel for assistant

The on and off of all the instruments are controlled by photoelectric sensor system

HV suction system with anti-backflow function.

Suction tubes and handles can be easily detached and disinfected.



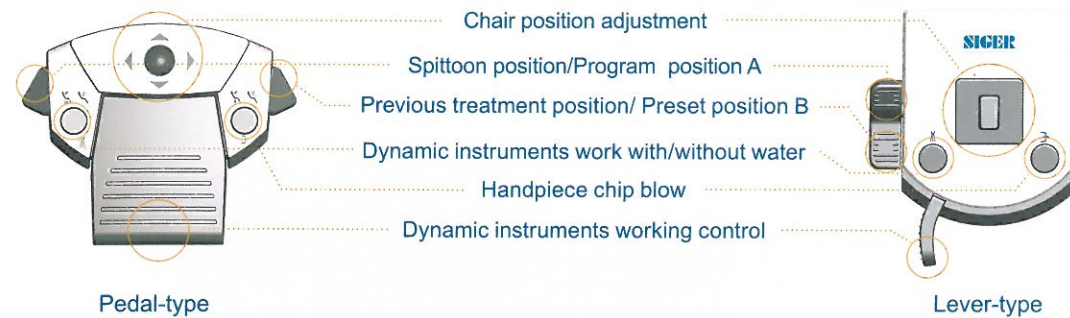


## EASILY CARRY OUT BY MULTIFUNCTIONAL FOOT CONTROL:

Automatic access to preset chair position  
Automatic access to preset spittoon position  
Automatic ON/OFF of operating light  
Automatic spittoon rinse  
Automatic cup filling  
Intelligent return to the previous position  
Adjustable chair positions  
Dynamic instruments speed control  
.....



Wireless foot control is optional



## SIGER U100

### STANDARD CONFIGURATION:

Swing-type/ hanging-type dentist element  
Control panel for dentist  
Built-in intraoral X-ray film viewer  
Two 4-holes tubings for turbine  
One 4-holes tubing for air motor  
One 3-way syringe for dentist  
Control panel for assistant  
One 3-way syringe for assistant  
One hydraulic saliva ejector  
One pneumatic HV suction  
Patient chair of U100 type  
Multifunctional headrest  
Left armrest  
Balance arm with air lock system  
Multifunctional foot-pedal with program memory  
LED operating light  
Rotatable hydro-group  
Rotatable/detachable hygienic ceramic spittoon  
Distilled water system  
Cup filling system with warm water  
Dentist stool





Autoclavable silicon pad on instrument table.



Detachable ceramic spittoon for cleaning.



Detachable suction system for cleaning.



Distilled water/tap water switching system.

The height of the seat and backrest of dentist stool and the tilt of backrest can be adjusted to meet with ergonomics.

Assistant stool is optional.



## LED OPERATING LIGHT WITH SENSOR

Unique optical design, ideal depth of focus by full overlay of light sources

Even-distributed light spot with clear and smooth edges

Similar to natural light with outstanding CRI

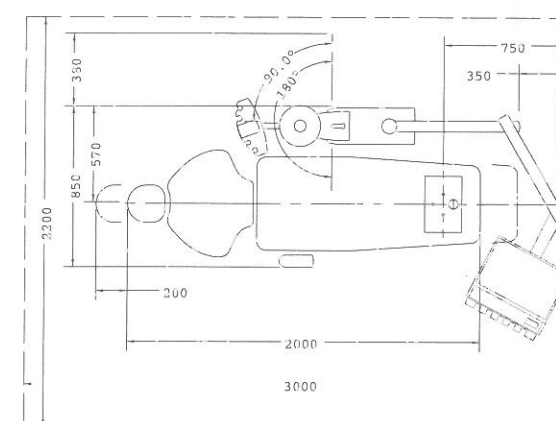
Illumination: 6500-26000LUX

Color Temperature: 4300°K

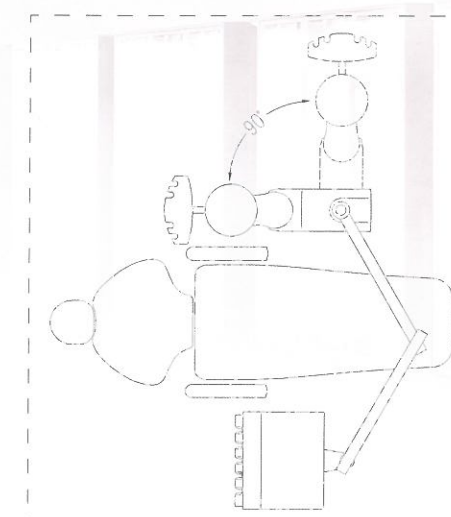
Spot Dimension: 70×140MM (@700MM)



V2-LED operating light is optional



Dental chair size chart



U100/U200 hydro-group with 90° rotation

## UPHOLSTERY COLOUR



U1# U2# U3# U4# U5# U6# U7# U8# U9# U10# U11# U12# U13#